



# The Next Wave

Innovative new cruise ships offer high class on the high seas

BY LISA A. BEACH

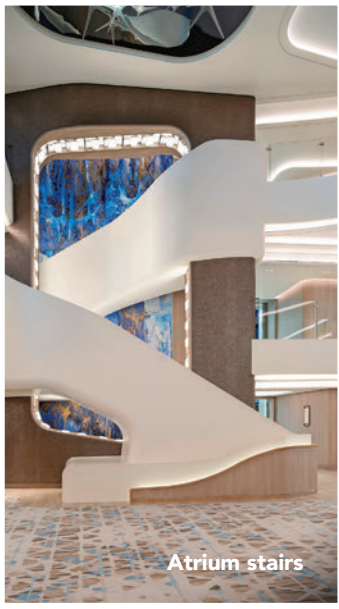
**AS I BOARDED** Royal Caribbean's new Icon of the Seas — now the world's largest cruise ship — I was immediately awestruck by the Pearl. An enormous tiled sphere that glows in purple and pink, the Pearl houses a 24-hour café and is engineered to bear the weight of the three decks above it.

The Pearl is just one example of the rapid innovations coming to cruise ships as the industry continues trying to outdo itself. Beyond their increasing sizes, the latest and greatest cruise ships are pushing the boundaries of luxury, technology and passenger engagement. Here are the newest ships cruising on the vanguard of nautical travel:



## ROYAL CARIBBEAN'S ICON OF THE SEAS

As the world's largest ship — 20 decks and a capacity for 5,610 guests — Icon boasts the largest at-sea waterpark, which includes six record-breaking slides. Guests can relax in the tranquil Central Park, a living oasis with more than 20,000 live plants. Families can have fun at Surfside, the kid-friendly neighborhood filled with places to splash, climb and play. More than 40 unique dining and drinking venues make it possible to satisfy any culinary craving. The Icon also offers vibrant onboard experiences ranging from rock climbing and ice skating to Broadway-style shows and surfing simulators. Sailing from Miami on both Eastern and Western Caribbean routes, each journey includes a stop at Perfect Day at CocoCay, Royal Caribbean's exclusive island in the Bahamas.



Atrium stairs

### NORWEGIAN CRUISE LINE'S NORWEGIAN VIVA

Boasting some of the most spacious staterooms at sea, Norwegian Viva redefines luxury. With a capacity for 3,195 guests, Viva invites passengers to relax by the infinity pool or get pampered at Mandara Spa. Savor 270-degree views and delectable dishes at Hudson's, enjoy a meal at the refined Commodore Room and treat your palate to the global flavors of Indulge Food Hall. Get your thrills at the three-story Viva Speedway go-kart racetrack and The Drop, the world's first free-fall dry slide. Stroll across the cruise line's first glass bridge and wander through The Concourse, a seaside sculpture garden, to enjoy interactive art installations. Teens will love the new Entourage space, which is packed with dynamic activities such as karaoke and video games.



Magic Carpet

### CELEBRITY CRUISES' CELEBRITY ASCENT

With 17 decks and a capacity for 3,260 guests, the Celebrity Ascent wows cruisers with its innovative features, luxurious amenities and immersive experiences. The iconic Magic Carpet platform offers stunning ocean views, transitioning from alfresco lunches to sunset cocktails as the day unfolds. With 32 diverse food and beverage options, indulge in globally inspired flavors, including fine dining at Le Voyage by Daniel Boulud and fresh seafood at Raw on 5. The Mediterranean-inspired Sunset Bar, designed by Nate Berkus, provides a chic setting for drinks. Evenings come alive with cutting-edge entertainment and exclusive production shows at The Theatre. Groups can enjoy private experiences at The Annex, an interactive and dynamic venue featuring a multisport simulator, sports broadcasting, movie streaming and karaoke.



Sun Princess

### PRINCESS CRUISES' SUN PRINCESS

Dubbed "the next-level Love Boat," the Sun Princess blends luxury with innovation as the brand's first ship powered by liquefied natural gas — a cleaner fuel. The ship's architectural marvel, the Sphere atrium, floods the interior with natural light, creating a stunning social gathering spot. Experience the world's first geodesic dome at sea, where the renowned Cirque Éloize delivers mesmerizing performances. Savor 30 ways to dine and drink, digging into culinary adventures boasting celebrity collaborations, high-end ingredients and diverse global flavors. With a capacity for 4,300 cruisers, the Sun Princess offers a range of cabin choices, including 80 suites and the next-level Sanctuary Collection. And with 21 decks, the ship offers extraordinary experiences such as the magic-infused sensations at Spellbound by Magic Castle.



Sphere